

# PERIMETER

**SURVEYING & MAPPING**  
 Certificate of Authorization No. LB7264  
 Prepared by: Jeff S. Hodapp, P.S.M.  
 951 Broken Sound Parkway, Suite 108  
 Boca Raton, Florida 33487  
 Tel: (561) 241-9988  
 Fax: (561) 241-5182

# BEXLEY PARK

A PORTION OF THE NORTHWEST ONE-QUARTER OF  
 SECTION 12, TOWNSHIP 46 SOUTH, RANGE 42, EAST,  
 CITY OF DELRAY BEACH, PALM BEACH COUNTY, FLORIDA.  
 FEBRUARY, 2004

56

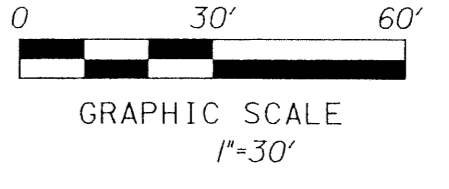
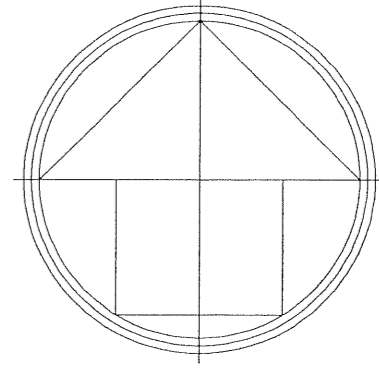
N.E. CORNER OF N.W. 1/4  
 OF SECTION 12-46-42  
 FOUND NAIL & BRASS DISK

L.W.D.D. LATERAL CANAL L-30  
 (O.R.B. 6495 PG. 761 P.B.C.R.)

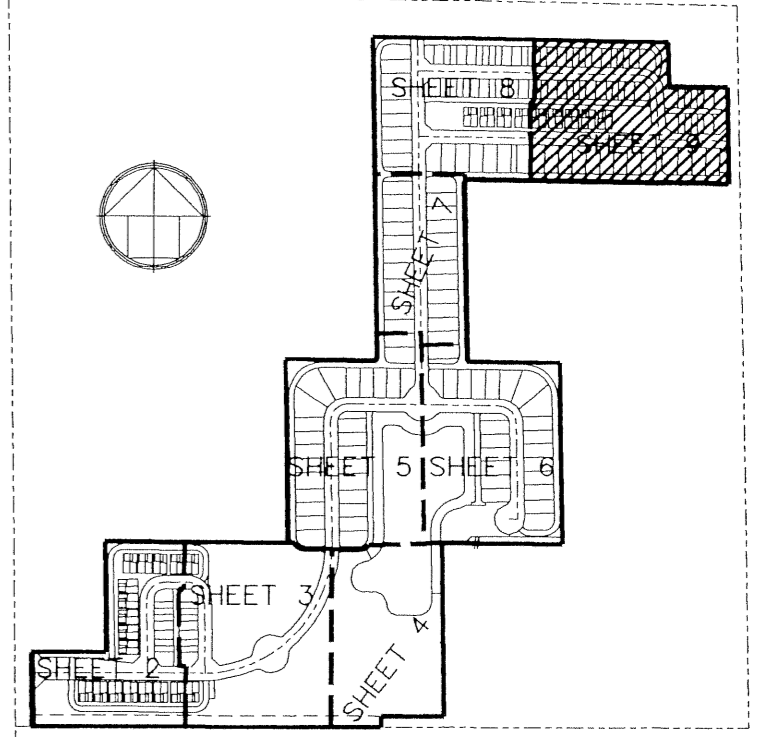
S89°02'23"E 1072.14'

PLAT LIMITS

N 782426.746  
 E 945561.729



SHEET 9 OF 9



- LEGEND:**
- ⊙ SET P.R.M. (UNLESS OTHERWISE NOTED)-4" X 4" CONC. MON. WITH ALUMINUM DISK STAMPED •LB7264 P.C.P. CENTERLINE
- ABBREVIATIONS:**
- AC. ACRES
  - A.G.E. ACCESS AND GARAGE EASEMENT
  - CHB CHORD
  - CONC. CONCRETE
  - COR. CORNER
  - D.E. DELTA (CENTRAL ANGLE)
  - HOA HOMEOWNERS' ASSOCIATION
  - I.R.R. IRON ROD
  - I.R.C. IRON ROD AND CAP
  - L.B. LENGTH
  - L.E. LICENSED BUSINESS
  - L.M.E. LAKE MAINTENANCE EASEMENT
  - L.M.A.E. LAKE MAINTENANCE ACCESS EASEMENT
  - L.S. LICENSED SURVEYOR
  - L.W.D.D. LAKE WORTH DRAINAGE DISTRICT
  - MON. MONUMENT
  - O.R.B. OFFICIAL RECORDS BOOK
  - N.R. NON-RADIAL
  - PLAT BOOK PLAT BOOK
  - P.B.C.R. PALM BEACH COUNTY RECORDS
  - PG. PAGE
  - P.C.P. PERMANENT CONTROL POINT
  - P.O.B. POINT OF BEGINNING
  - P.O.C. POINT OF COMMENCEMENT
  - P.R.M. PERMANENT REFERENCE MONUMENT
  - P.S.M. PROFESSIONAL SURVEYOR & MAPPER
  - P.U.D. PLANNED UNIT DEVELOPMENT
  - R. RADIUS
  - R.E.E. ROOF ENCROACHMENT EASEMENT
  - R/W RIGHT-OF-WAY
  - SEC. SECTION
  - S.F. SQUARE FEET
  - U.E. UTILITY EASEMENT
  - W.S.E. WATER AND SEWER EASEMENT
  - FPL FLORIDA POWER & LIGHT CO.

SEE SHEET 8  
 MATCH LINE

BARKWICK ROAD  
 180' R/W

E. LINE OF N.W. 1/4 OF SECTION 12-46-42

7

6

B L O C K

1

5

4

3

2

1

GOLF CLUB ESTATES  
 (P.B. 25 PG.235)

N 781899.646  
 E 945782.262